



Urban Water Demand Roundtable

Arizona State University, Tempe, Arizona

April 18 & 19, 2013

Seattle
 Public
Utilities

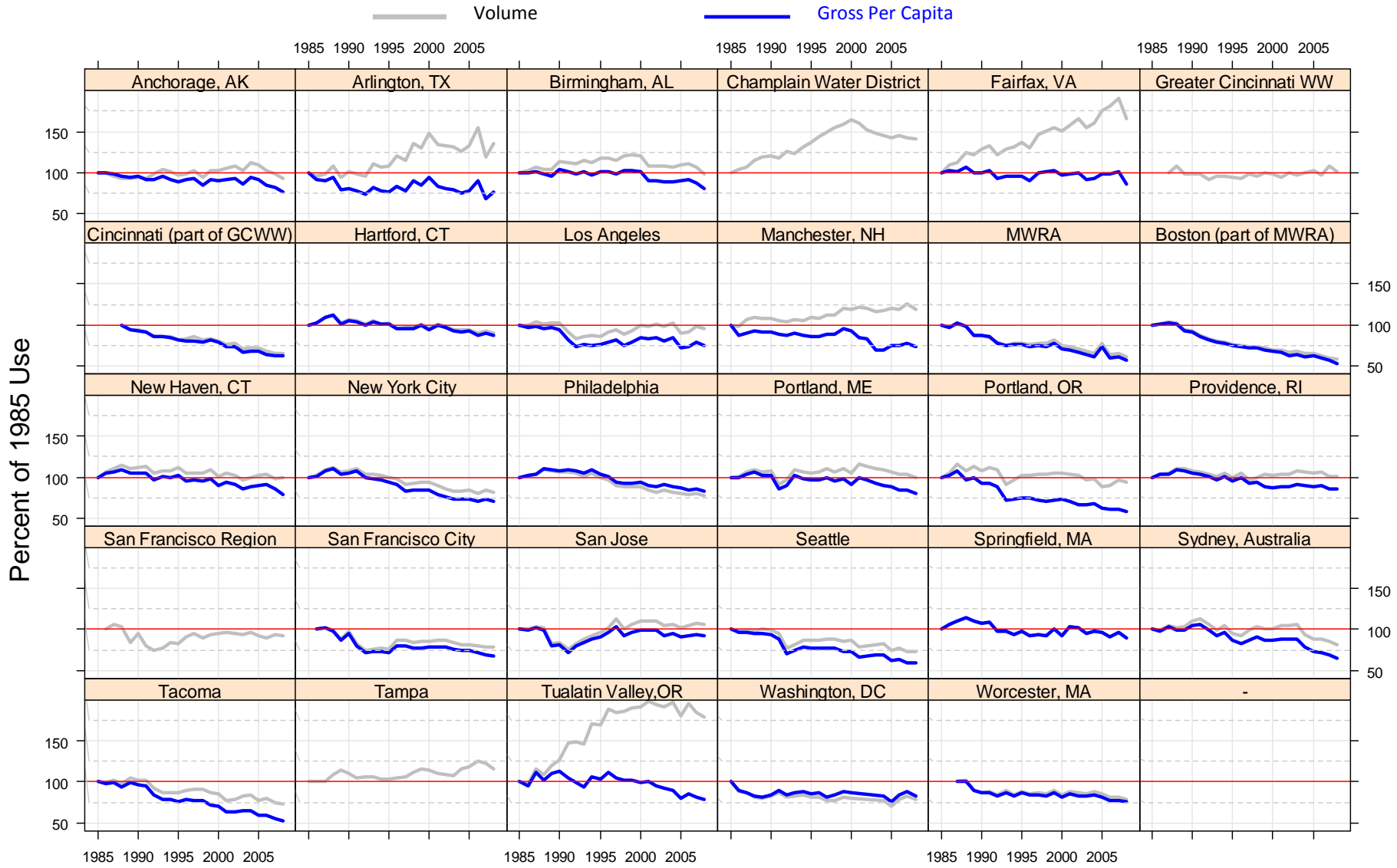
Why Are We Here?

Bruce Flory

**Principal Economist
Seattle Public Utilities**

National Water Use Comparison

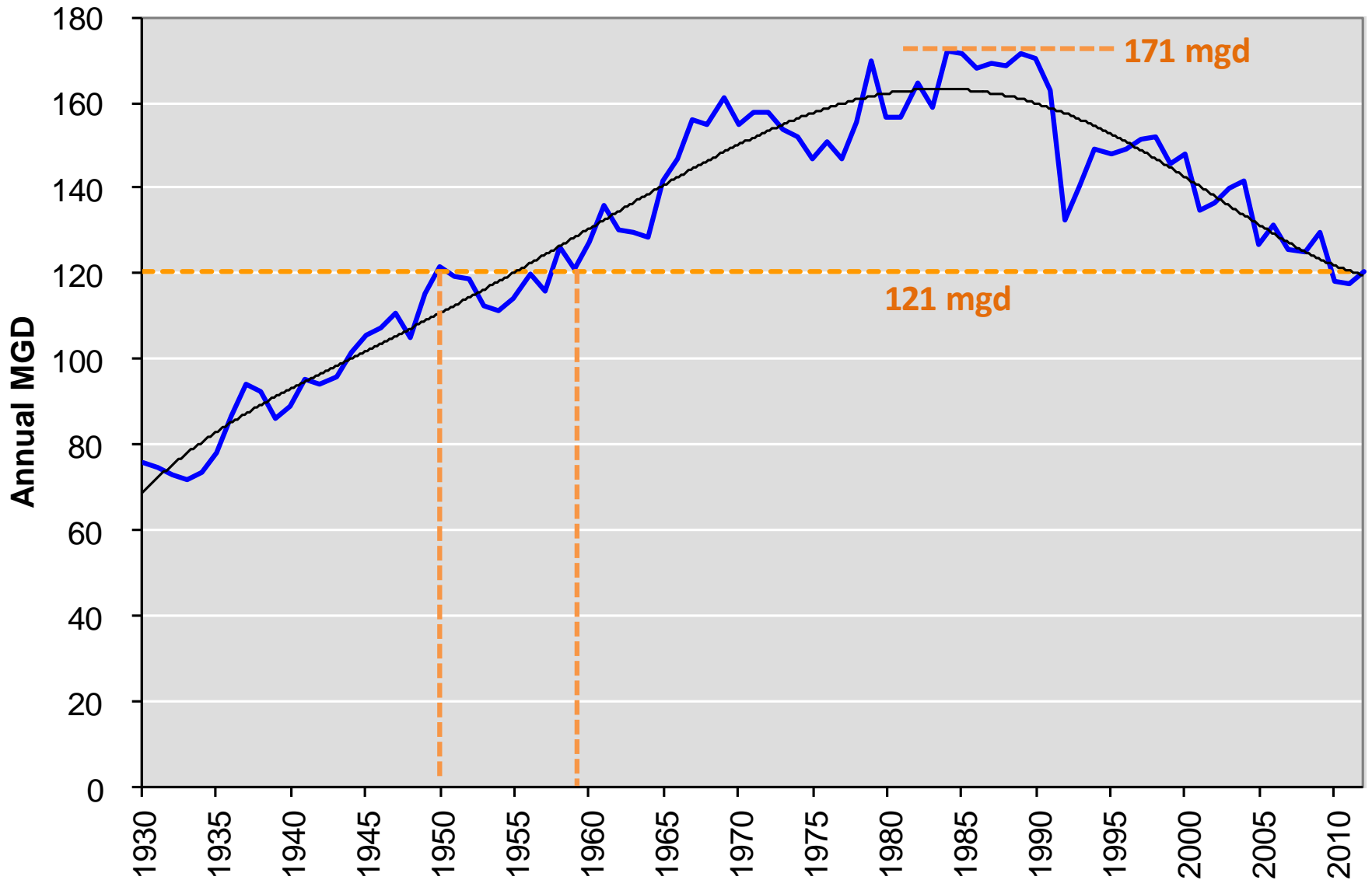
(Compiled by the Massachusetts Water Resource Authority)



Year

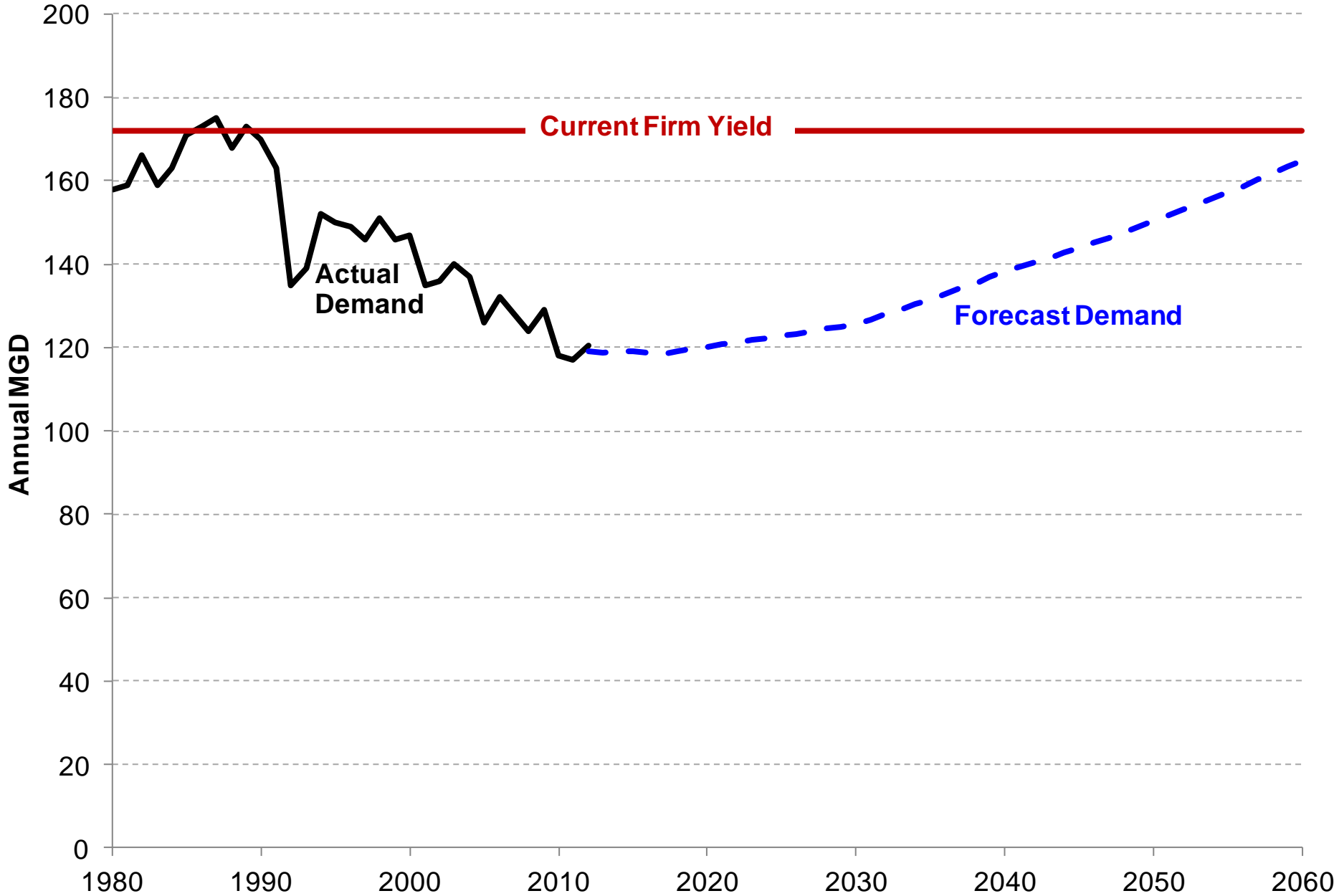
* For a few cities where 1985 data was not available the indexing is on the earliest date provided.

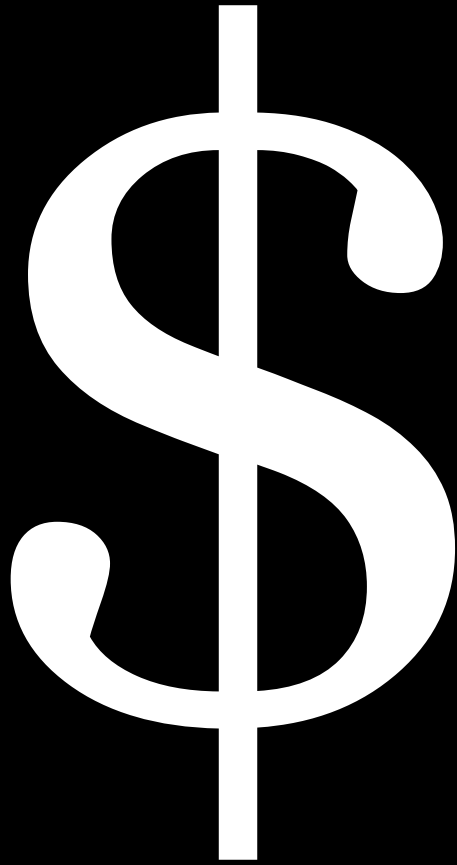
Total Seattle Regional Water System Annual Demand in Millions of Gallons per Day: 1930-2012



Forecast of Water Supply and Demand

Seattle Regional Water System

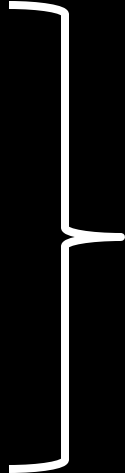




If Not Conservation, what?

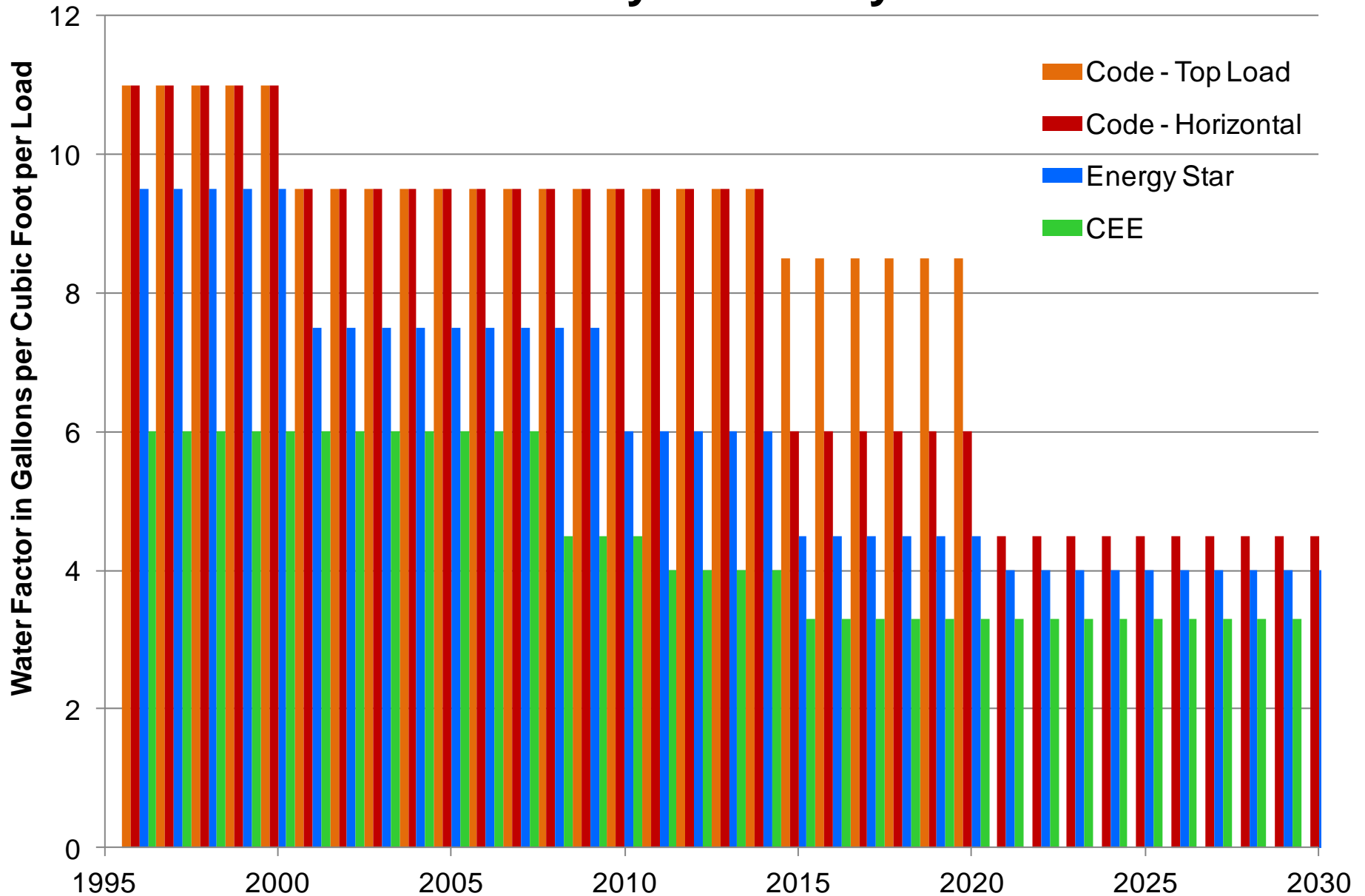
- **Demand Forecasting**
- **Rate Structure**
- **Politics of Rapidly Rising Rates**

What's Driving Demand Down?

- **Price Effects**
 - **Conservation Programs**
 - **Code Savings**
 - **Market Transformation**
- Passive Savings**
- 

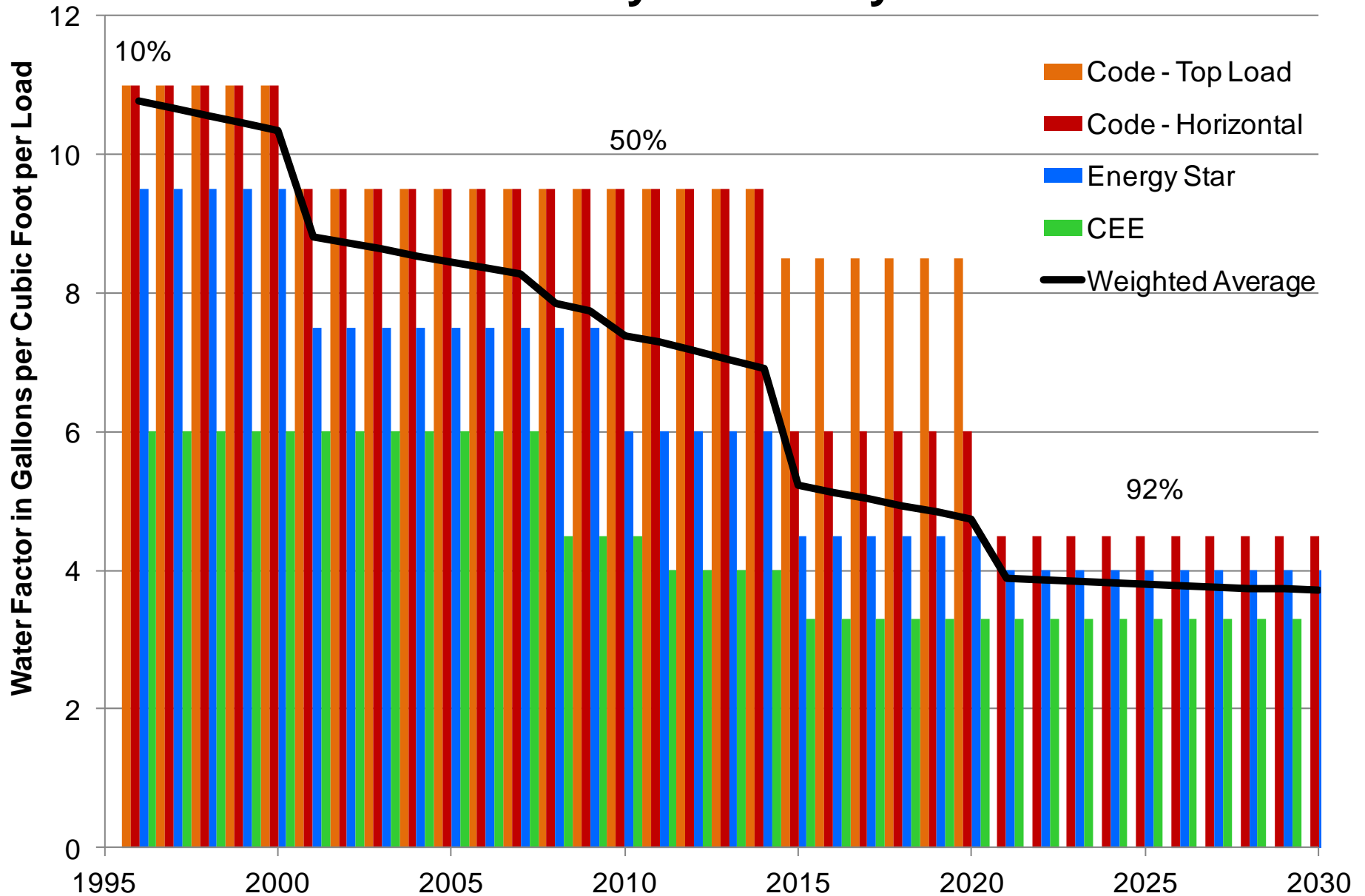
Washing Machine Water Factors

Code and Industry Efficiency Standards

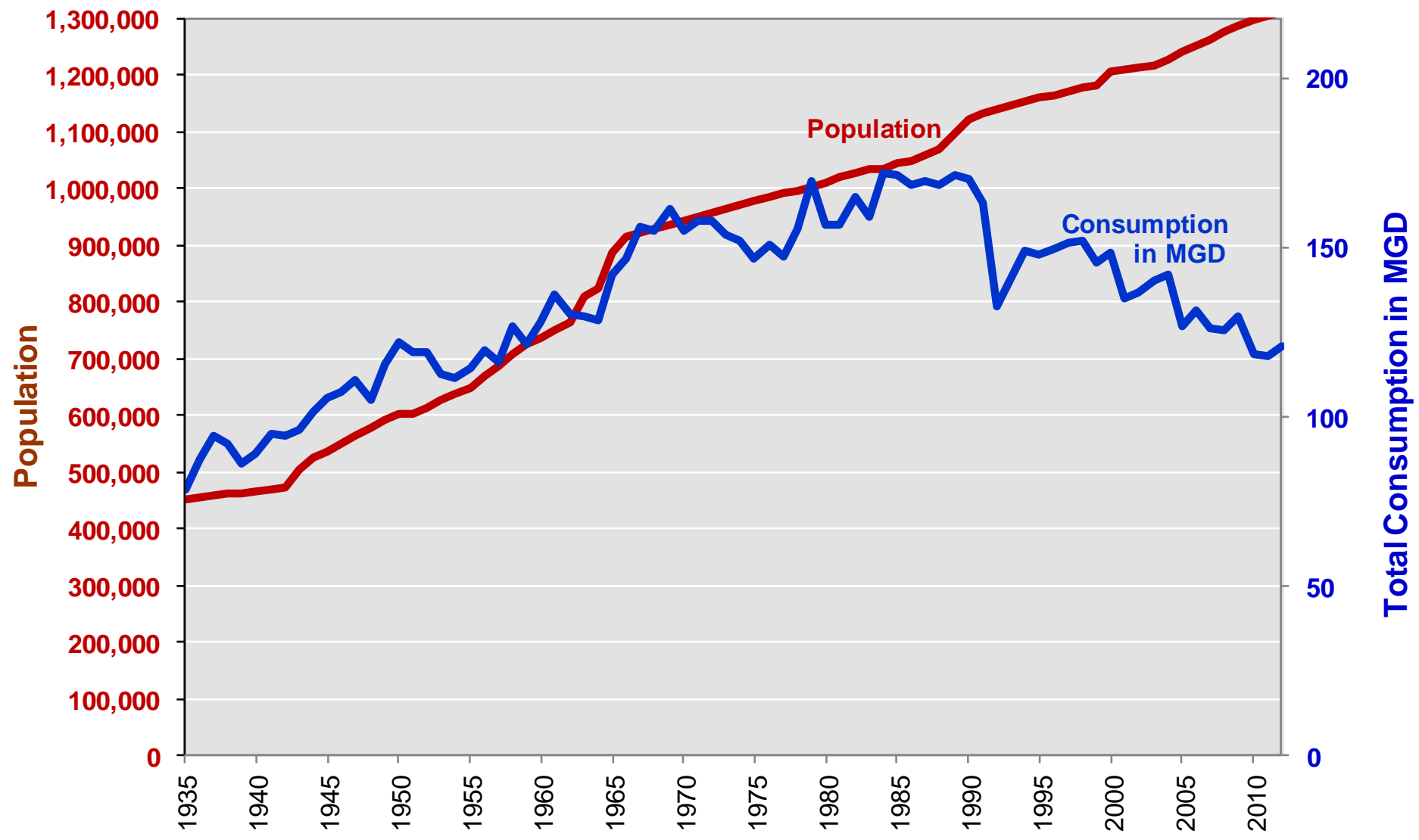


Washing Machine Water Factors

Code and Industry Efficiency Standards



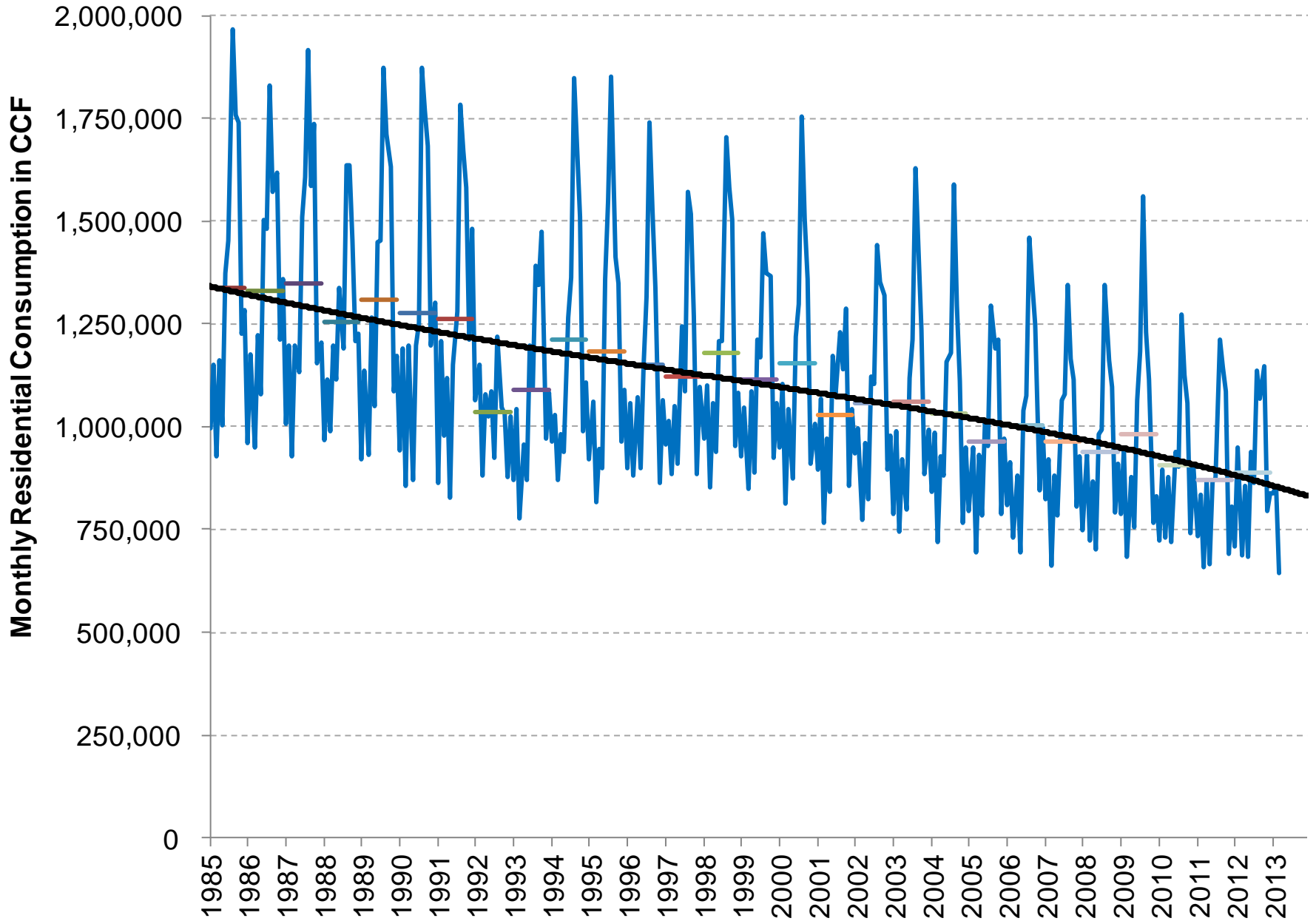
Growth in Population and Water Consumption Seattle Regional Water System: 1935- 2012



**How low can
you go?**



Cyclical vs. Structural



Different Forecast Methods

Trend
Extrapolation

Per
Capita

Fixed
Flow
Factor

Variable
Flow
Factor

End Use
Econometric

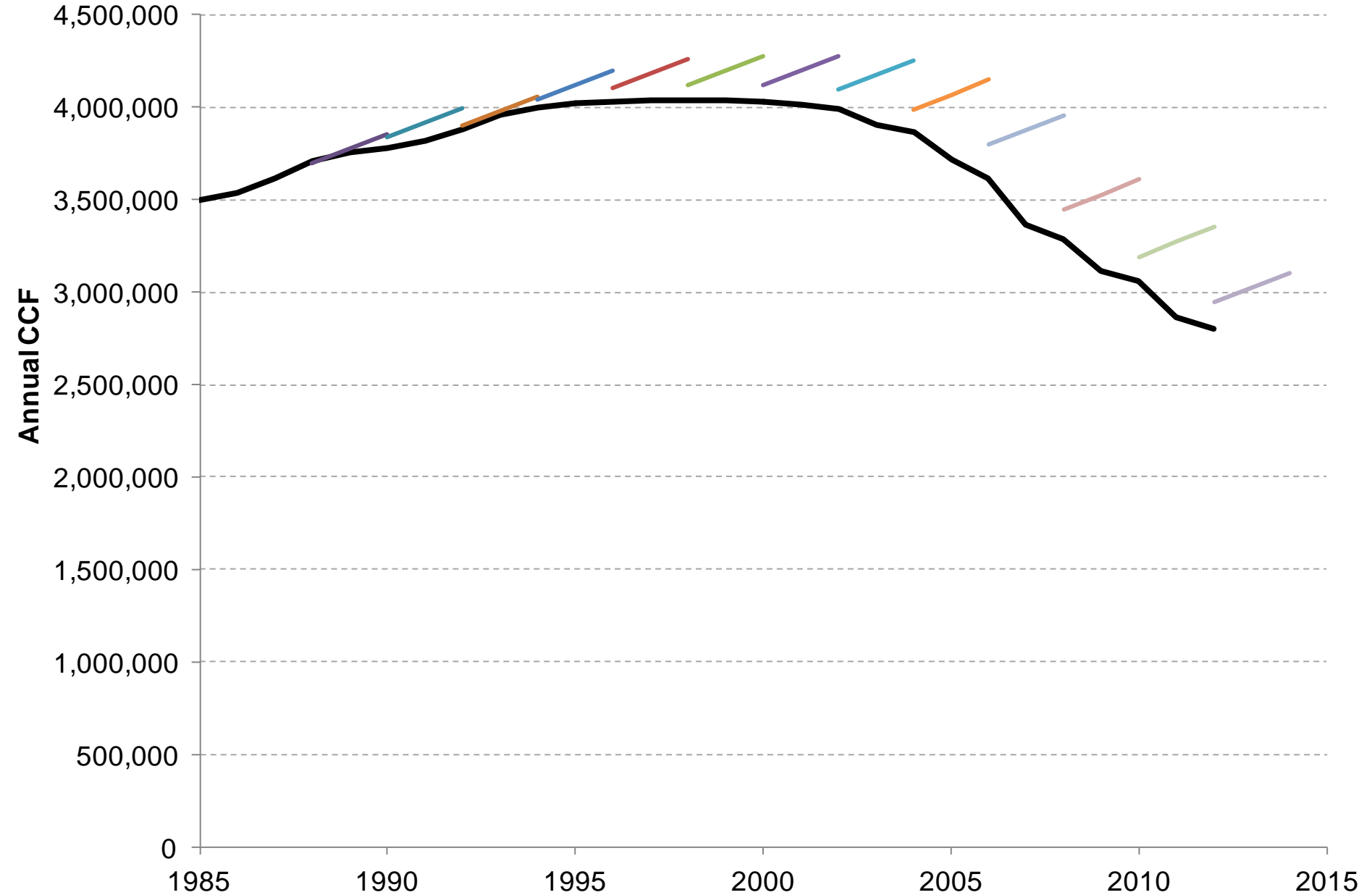
Low

Cost & Complexity

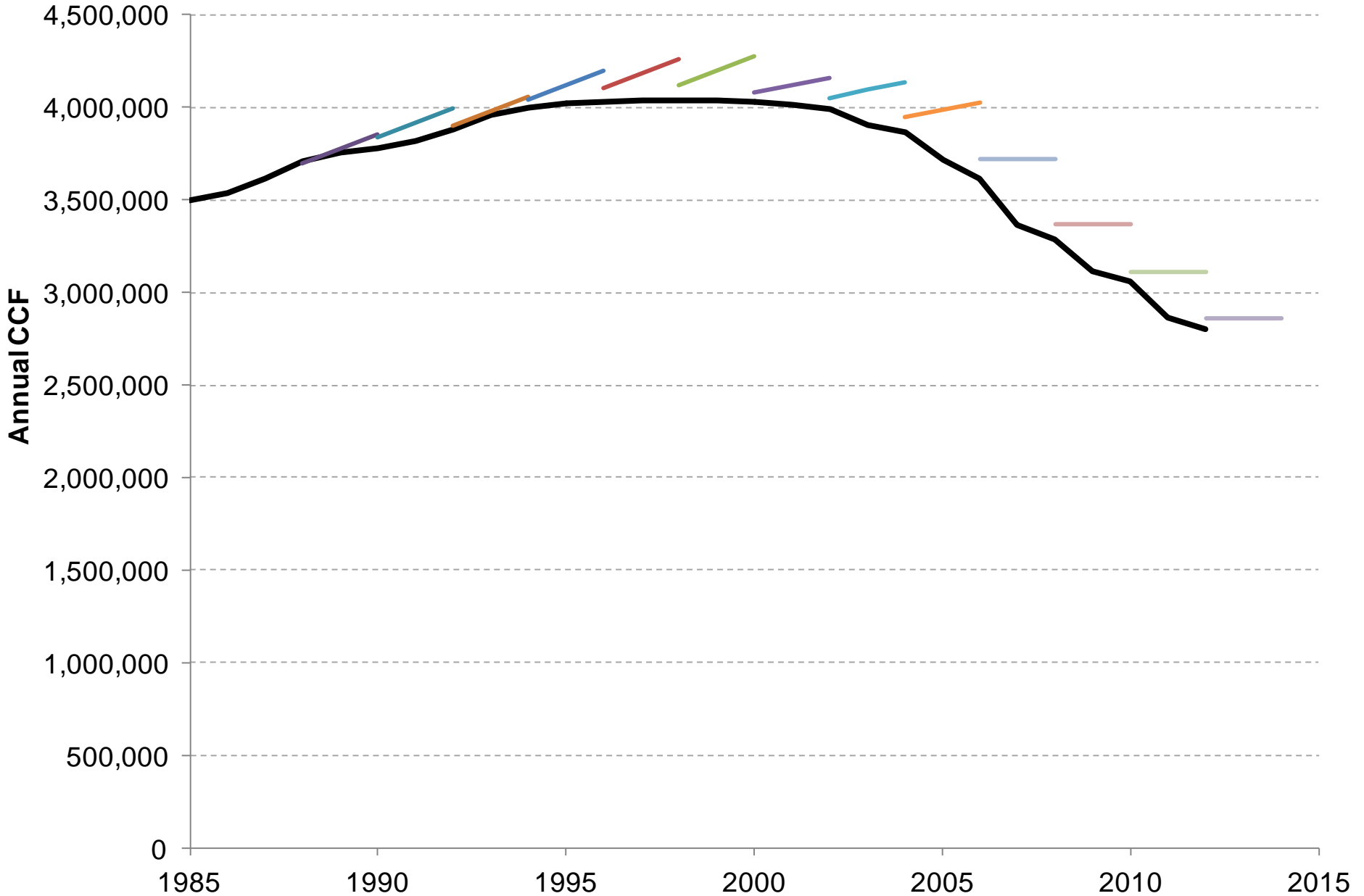
High



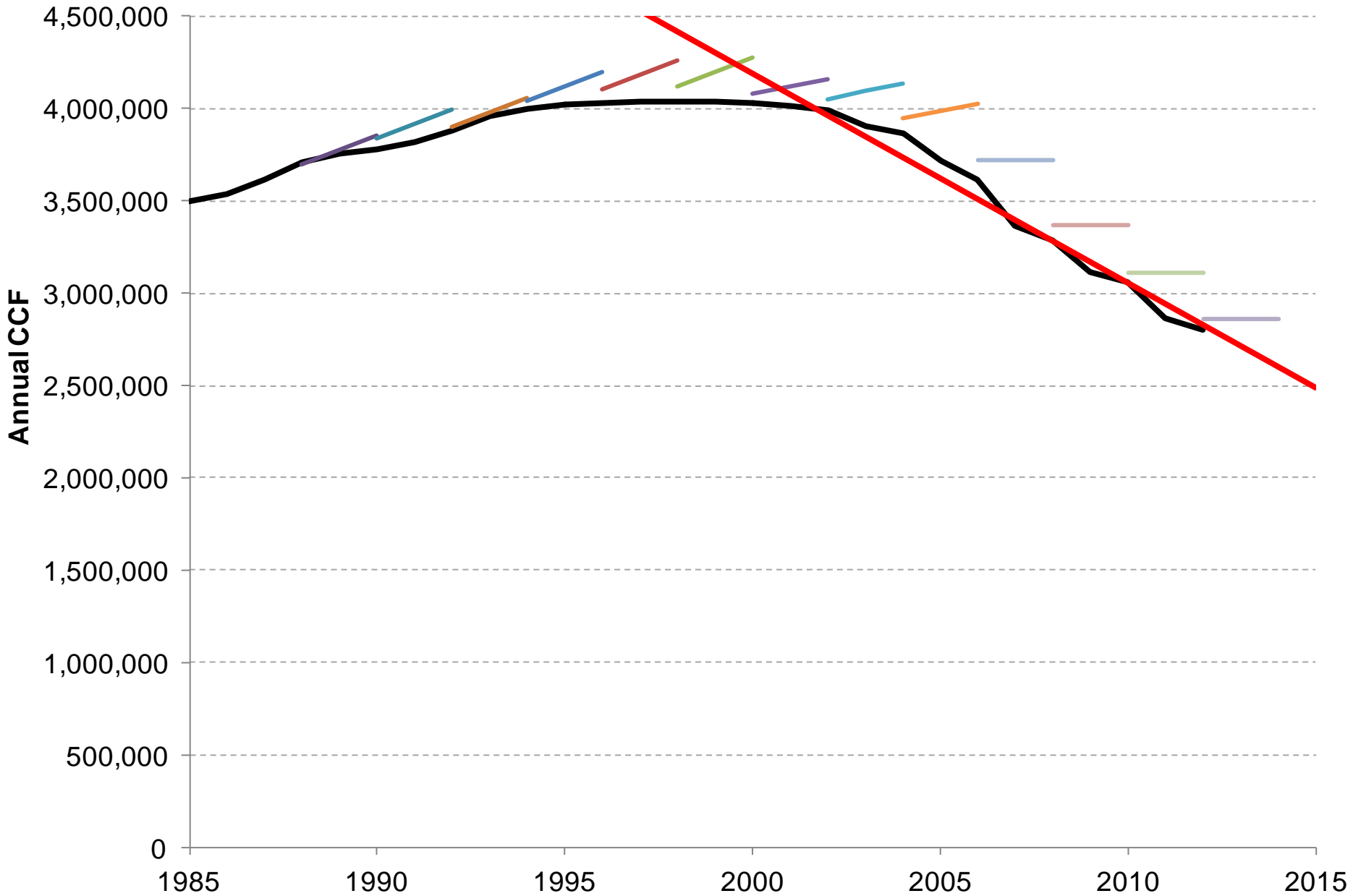
Fixed Flow Factor



No Growth



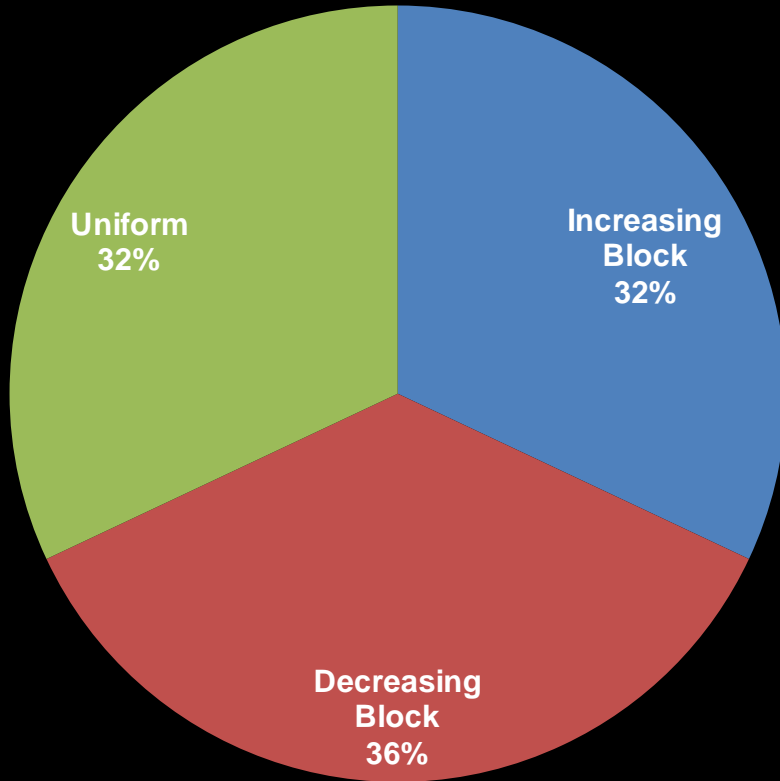
Trend



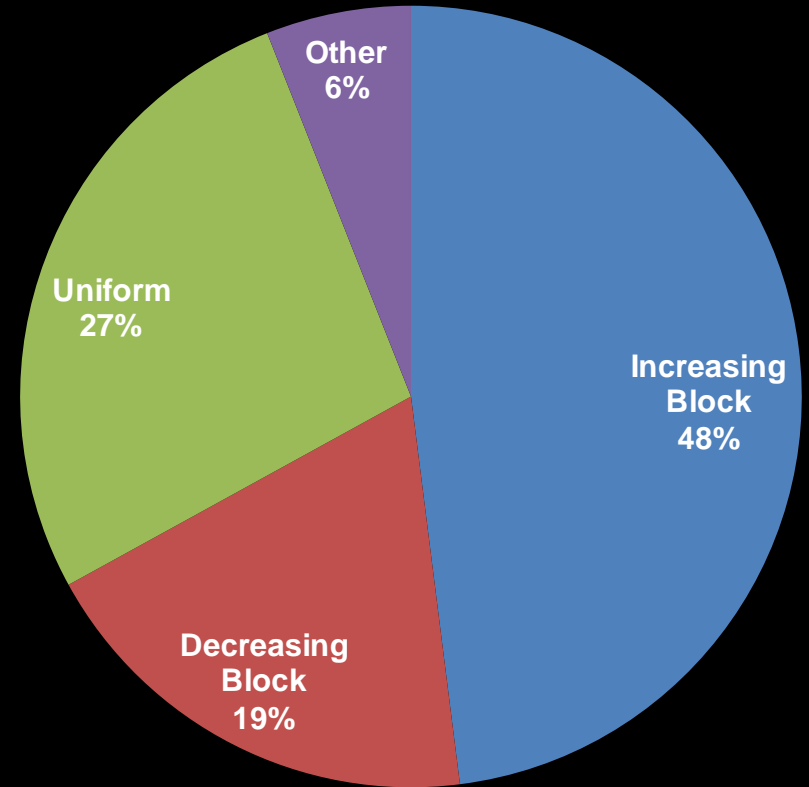
Conservation Rate Structures

Residential Water Rate Structures

1996

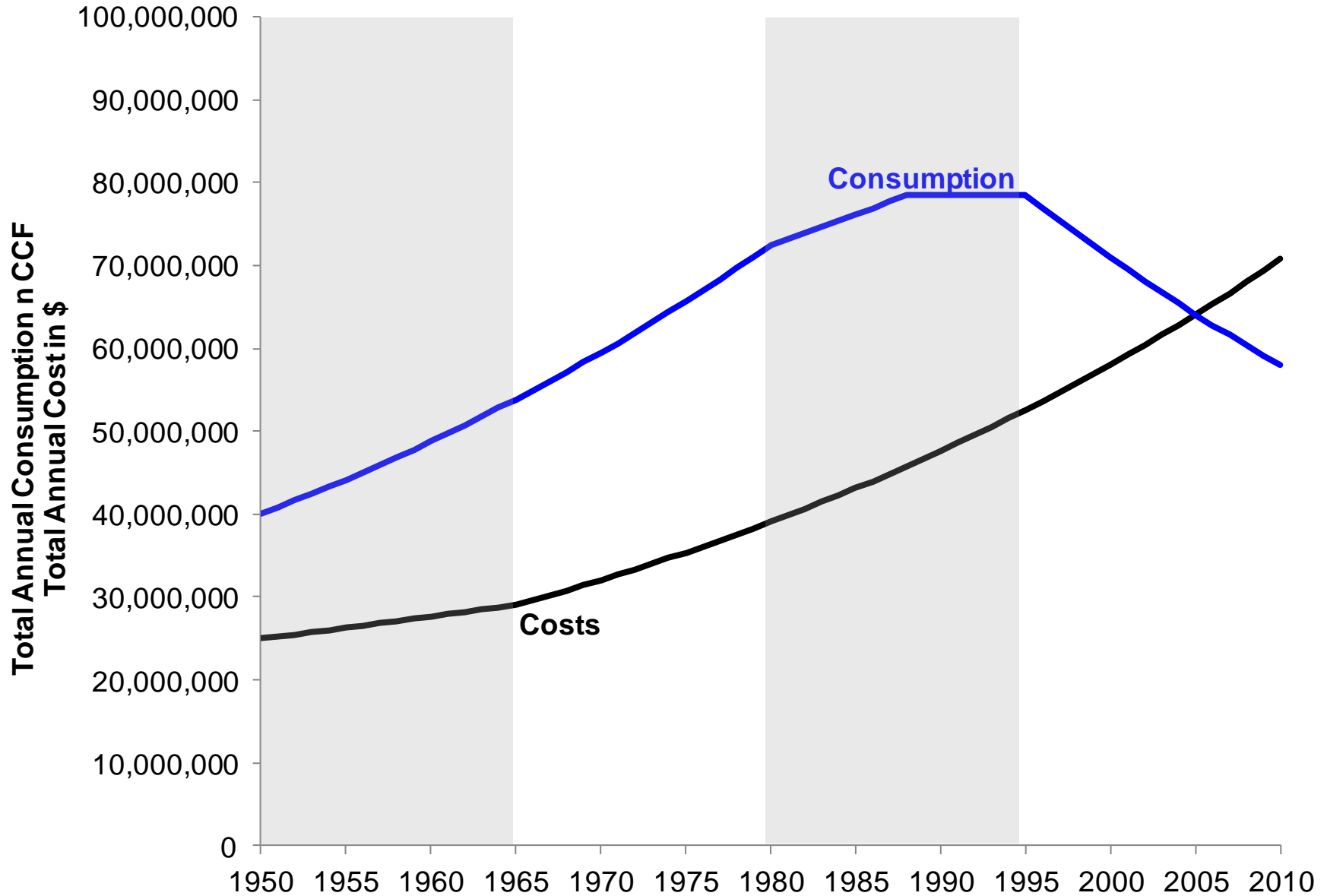


2010

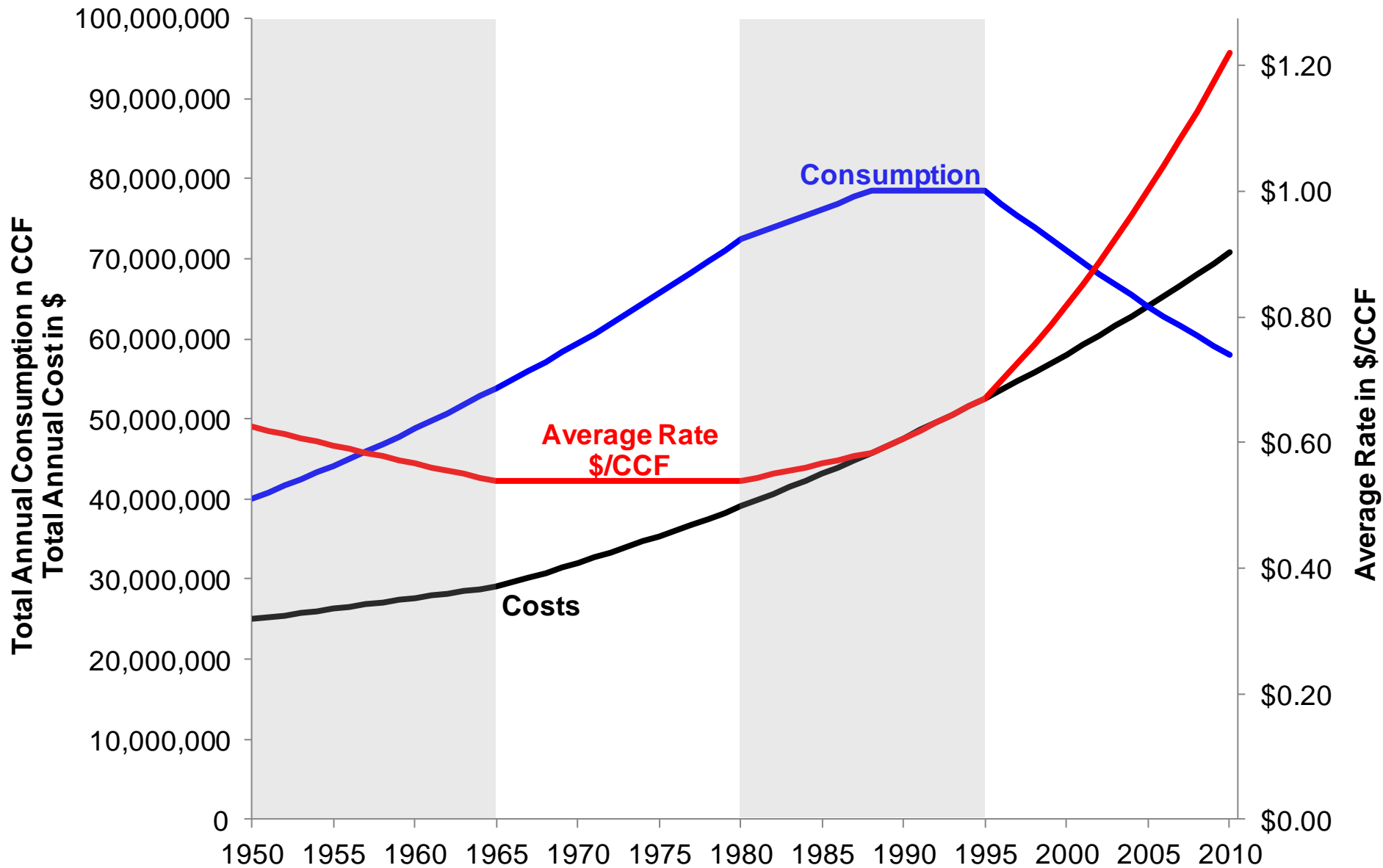


Source: AWWA & Raftelis Consultants

Costs & Consumption



Costs, Consumption & Rates



METRO

The Oregonian

B

013

NEWS FROM THE PORTLAND AREA AND THE NORTHWEST

2/19/13

Using less water boosts rates

With budgets pegged to volume, Portland's utility bureaus see revenue drop as people conserve

By **BRAD SCHMIDT**
THE OREGONIAN

Use less. Pay more?

It's a strange concept. But in Portland, lower consumption is having an unsettling consequence on water and sewer bills: higher rates.

Thanks to thoughtful habits and energy-efficient home appliances, water consumption here and nationally is in decline. But because a large chunk of utility costs are fixed, city officials say, they must raise rates to make up for the water that customers aren't buying to green the grass or flush the toilet.

So Portland, which already has among the highest water/sewer bills in the country, is set to ask customers to pony up more.

Reining in utility rates was a campaign theme for Mayor Charlie Hales. City residents now face rate increases of 7.8 percent for water and 7.85 percent for sewer and stormwater services, according to budget requests from the Portland Water Bureau and the Bureau of Environmental Services. Final numbers won't be set until May, however, and they'll face plenty of scrutiny before then.

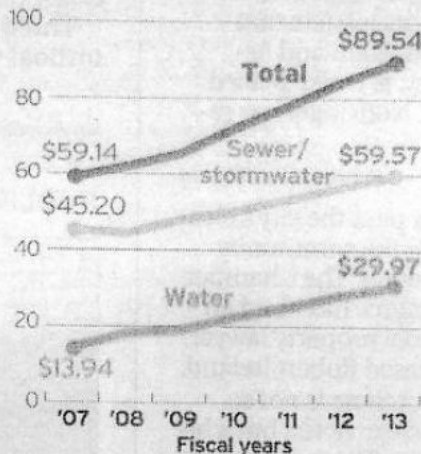
By no means is declining consumption the driving force behind the proposed hikes. Residents have reservoir projects and sewer repairs to thank for that. But consumption does carry a noticeable impact.

For water rates, about one-fifth of

Please see **WATER**, Page B6

Rising utility bills

Typical monthly water and sewer charges in Portland have jumped more than 50 percent in the past seven years.



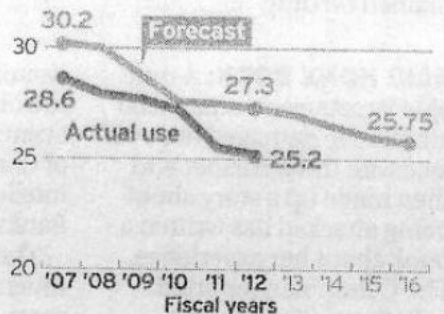
Note: Portland bills homeowners every three months. The water bill above is based on 600 cubic feet per month.

Source: City of Portland

Declining water demand

Retail water demand from Portland customers has declined 12 percent since fiscal 2007. Water Bureau officials are forecasting gradual declines in the next few years.

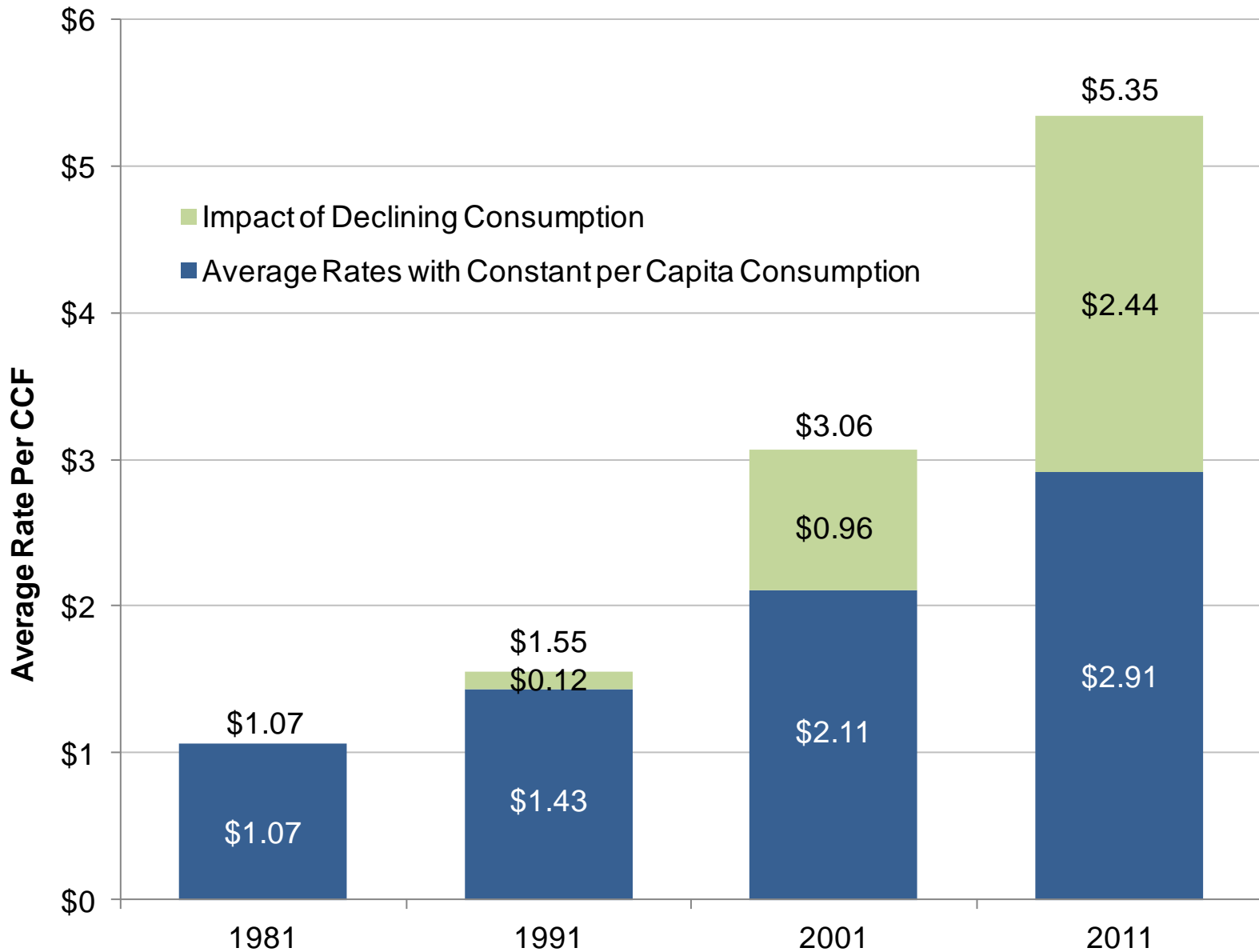
35 million CCF*



*One CCF equals 100 cubic feet

DAN AGUAYO/THE OREGONIAN

Average Rates in Constant 2011 \$s



Convince Us



In Summary

- **Not accounting for conservation**
- **More sensitive rate structures**
- **Political resistance**

Research Needs & Questions

- Household Income and Water Use
- End Use Studies – esp. MF and CII
- Separating sources of conservation and accounting for overlap
- Modeling passive savings
- Future shock – what new technologies and trends can we foresee now?
- Technology tipping points
- Distinguishing cyclical from structural effects